



EURO
CITIES

regio
Twente



Twente, the green innovative region

RVO.nl infodag
CEF/TEN-T
29 oktober 2014



EURO
CITIES

Who and what is Twente?

Bevolking

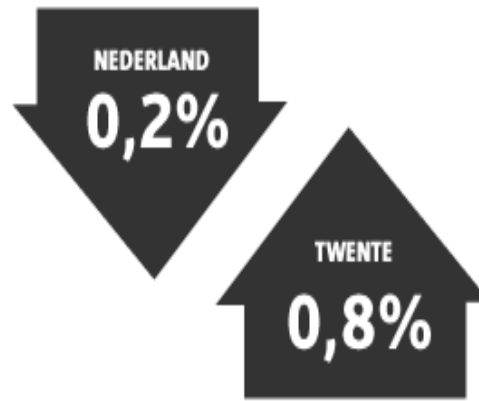
625.618

Inwoners



Bevolkingsgroei

*bevolkingsgroei 0,85 in Twente t.o.v.
een daling van 0,2% in Nederland.*



Bereikbaarheid

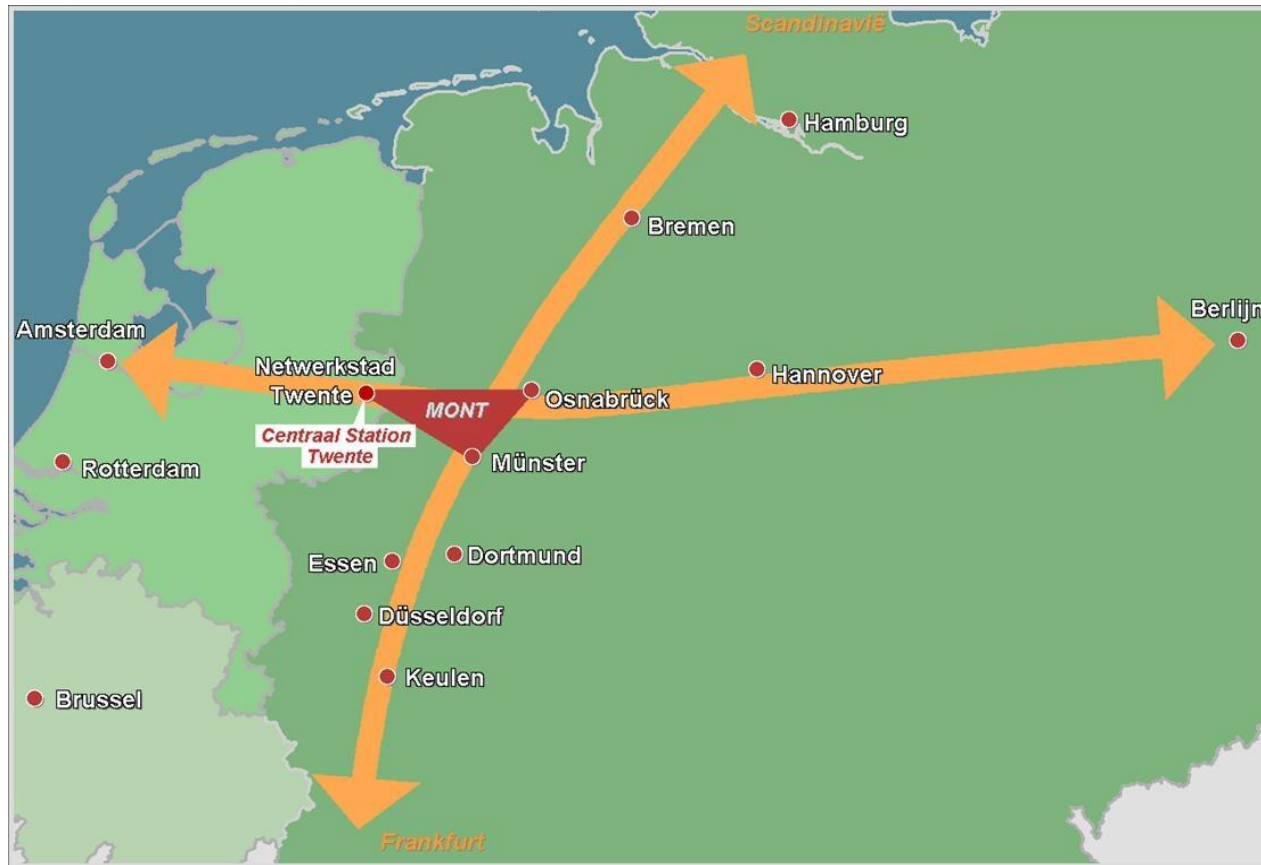
Internationale verbindingen





EURO
CITIES

Where is Twente?





EURO
CITIES

Twente 14 municipalities





EURO
CITIES

Twente and Euregio





EURO
CITIES

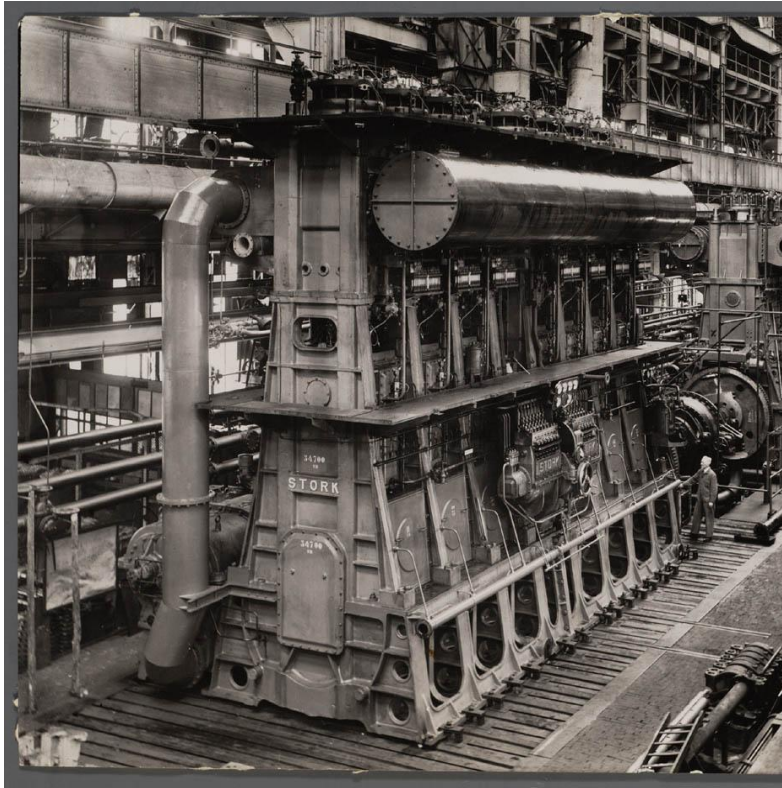
Twente is.....





EURO
CITIES

From past to.....





EURO
CITIES

.....present





EURO
CITIES

Hart van Zuid





EURO
CITIES

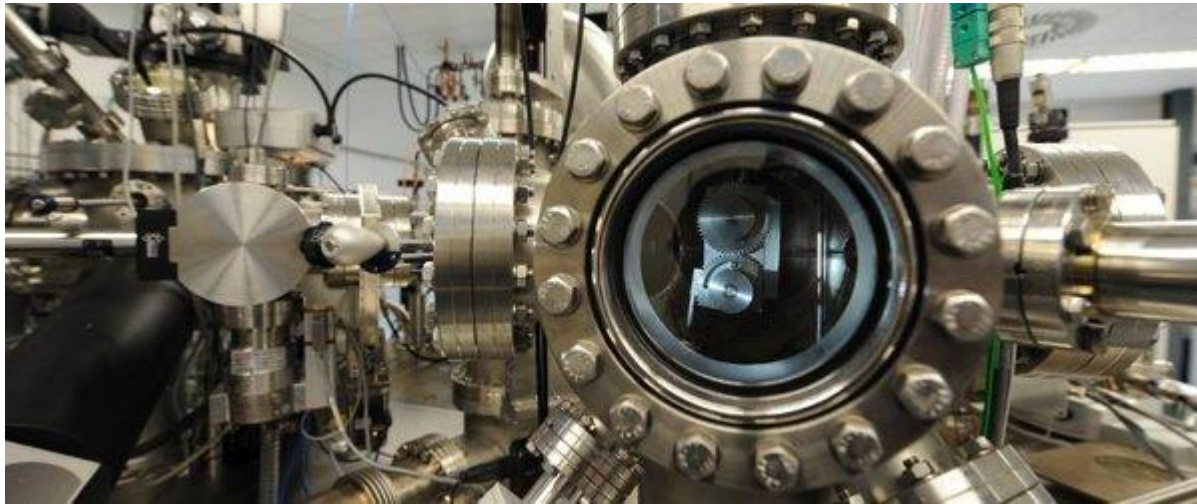
The Innovation Triangle/Kennispark Twente





EURO
CITIES

Nano technology HTSM



- What do you need?
- People
- Living Triple helix
- Infrastructure
- Courage
- Innovation leap Twente
- Money???
- Living labs
- *The high-tech systems & materials sector is the core of the Twente innovative manufacturing industry, namely more than 70% of industrial employment (32,000 of the 45,000 industrial jobs). The choice for these sectors is in line with Dutch top sector policy and European policy.*

- 14 municipalities 625.000 inh.
- Netwerkstad Twente 360.000 inh.
- Regio Twente, 625.000 inh.
- Euregio 3.200.000 inh
- MONT, 810.000 inh.

- **Twente**
- *The participating municipalities are: Almelo, Borne, Dinkelland, Enschede, Hof van Twente, Haaksbergen, Hellendoorn, Hengelo, Losser, Oldenzaal, Rijssen-Holten, Tubbergen, Twenterand and Wierden.*
- *Within 'Regio Twente' a distinction is made in 2 domains:*
- *Health ([GGD Twente](#))
Living environment*



- The fourteen municipalities realize these projects in close consultation with Zwolle as provincial capital, politics in The Hague and the European Union in Brussels.
- The heart of 'Regio Twente' is therefore: co-operation.
- Our plans for the coming years can be found in the ['Agenda of Twente'](#)

- In 2007 the Euroregion celebrated its 50th anniversary and with it, is the oldest of all Euroregions.
- Since 1958 The EUROREGION has been working to build and strengthen cross-border structures in the Dutch-German border area with over 130 German and Dutch municipalities and German 'Kreise'.
- Themes:
 - Social-cultural integration
 - Social economic development
 - Citizens advice Inter municipal cooperation
 - Interregional Cooperation



The North Sea Baltics Corridor

- NBC crosses 8 Member States (Belgium, Netherlands, Germany, Poland, Lithuania, Latvia, Estonia, Finland) and covers four modalities

North-Sea-Baltic Corridor





EURO
CITIES

- EU coordinator *Pavel Telicka* (former Czech European Commissioner) Advisor – James Pond





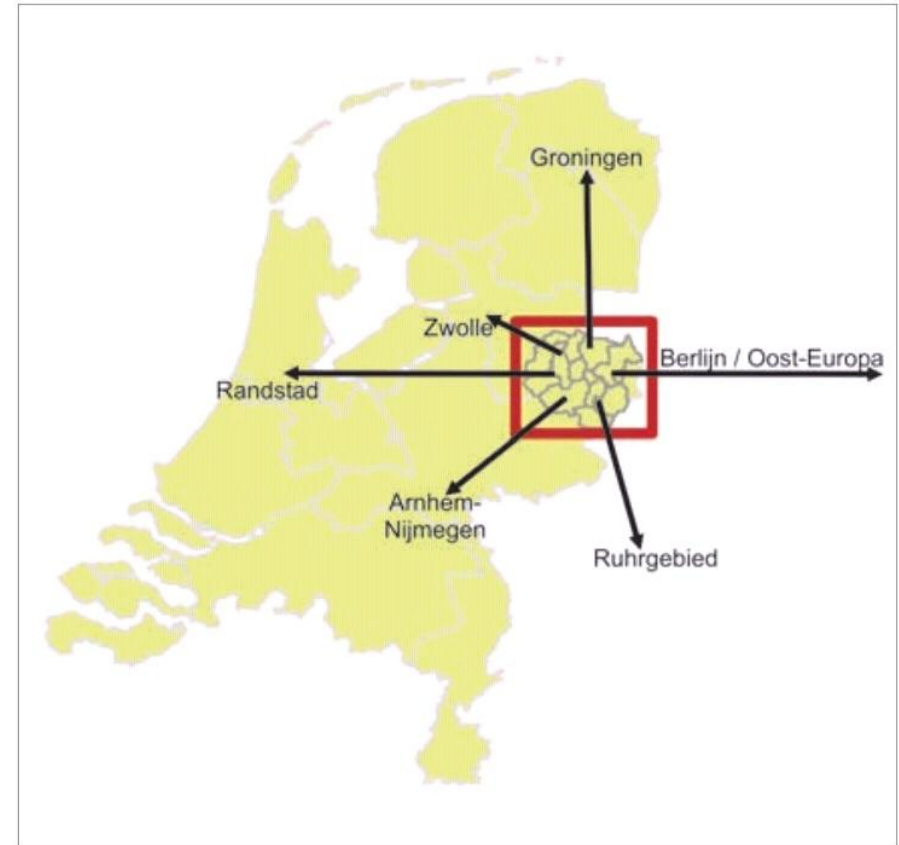
CEF: Pre-identified projects

Helsinki - Tallinn	Ports, MoS	port interconnections, (further) development of multimodal platforms and their interconnections, icebreaking capacity, MoS
Tallinn - Riga - Kaunas - Warszawa	Rail	(detailed) studies for new UIC gauge fully interoperable line; works for new line to start before 2020; upgrading and new line on PL territory; rail – airports/ports interconnections, rail-road terminals, MoS
Ventspils – Riga	Rail	Upgrading, port interconnections, MoS
Klaipeda – Kaunas	Rail	Upgrading, port interconnections, MoS
Kaunas – Vilnius	Rail	Upgrading, airports interconnections, rail-road terminals
Via Baltica Corridor	Road	works for cross-border sections (EE, LV, LT, PL)
BY border - Warszawa - Poznań - DE border	Rail	works on existing line, studies for high speed rail
PL Border - Berlin - Hannover - Amsterdam/Rotterdam	Rail	studies and upgrading of several sections (Amsterdam – Utrecht – Arnhem; Hannover – Berlin)
Wilhelmshaven - Bremerhaven - Bremen	Rail	Studies and works
Berlin - Magdeburg – Hannover, Mittellandkanal, West-German Canals, Rhine, Waal, Noordzeekanaal, IJssel, Twentekanaal	IWW	studies, works for better navigability and upgrading waterways and locks
Amsterdam locks & Amsterdam - Rijnkanaal	IWW	locks studies ongoing; port: interconnections (studies and works, including Beatrix lock upgrade)

- Multinational and interregional cooperation
- *Triple helix* commitment: governments, enterprises, knowledge institutions

But what is the importance for Twente/Euregio?

- Vision: Smart, Green, Inclusive Corridor





- The Proximare Consortium Conducts a North Sea – Baltic Corridor implementation and management study for the European Commission in 2014.
- Proximare: international business consortium that consists of experts in the fields of multimodal transport planning and engineering, law and stakeholder relations.
- Detailed descriptions of the corridor, identifying relevant stakeholders, assist DG MOVE in establishing a corridor forum
- Corridor work plans